



Wahlenbergia multicaulis

Tadgell's Bluebell

Height:	10cm - 50cm
Width:	30cm - 50cm
Habit:	Tufted erect to spreading many-stemmed perennial herb.
Foliage:	Narrow strap-like leaves to 6cm long.
Flowers:	Pale blue flowers in the form of open bells to 2cm wide, on branched stems. Flowers from September to May.
Requirements:	Well drained soils. Full or partial sun.
Cultivation & uses:	These grass-like plants are useful for planting in drifts, cottage gardens and rockeries. Plants die back to underground rootstock during long periods of dryness.

Local Distribution:

Map is indicative to the natural distribution of the species based on the best available knowledge.

The natural occurrence of this species is rare.

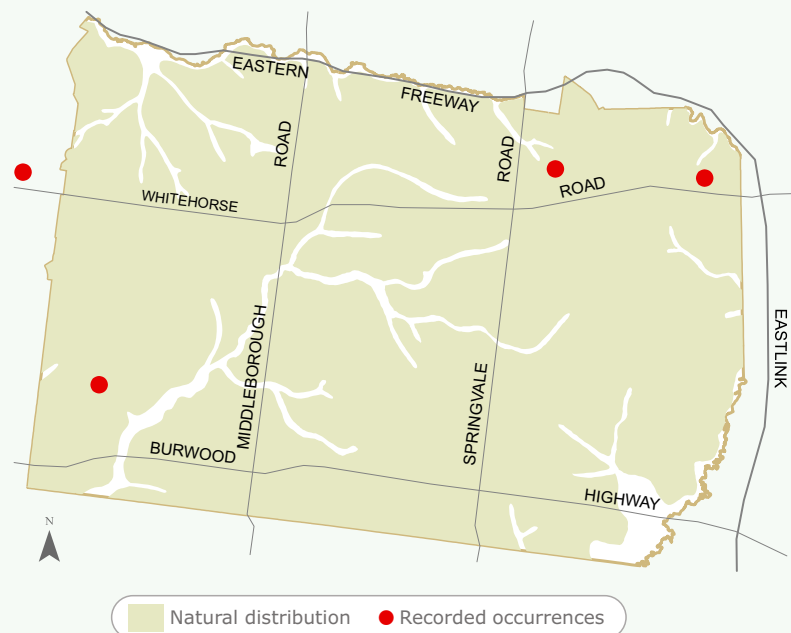


Image:

No image available.

Having trouble sourcing this species?



For further information
contact ParksWide
Phone: (03) 9262 6222

For more information about Council services
and programs please phone 9262 6333 or visit
www.whitehorse.vic.gov.au