



Pultenaea daphnoides

Large-leaf Bush Pea

Height:	1m - 3m
Width:	0.5m - 2m
Habit:	A slender erect branching shrub.
Foliage:	Large, flat, wedge-shaped olive green leaves to 3cm long, ending in a spiny tip and paler beneath.
Flowers:	Large yellow and reddish-brown flowers forming dense clusters at the end of branches. Flowers from August to November.
Requirements:	Well drained soils, tolerating dryness once established. Shade, full or partial sun.
Cultivation & uses:	An attractive soft shrub that may be planted beneath established trees. Prune to encourage a more bushy habit.

Local Distribution:

Map is indicative to the natural distribution of the species based on the best available knowledge.

The natural occurrence of this species is rare.

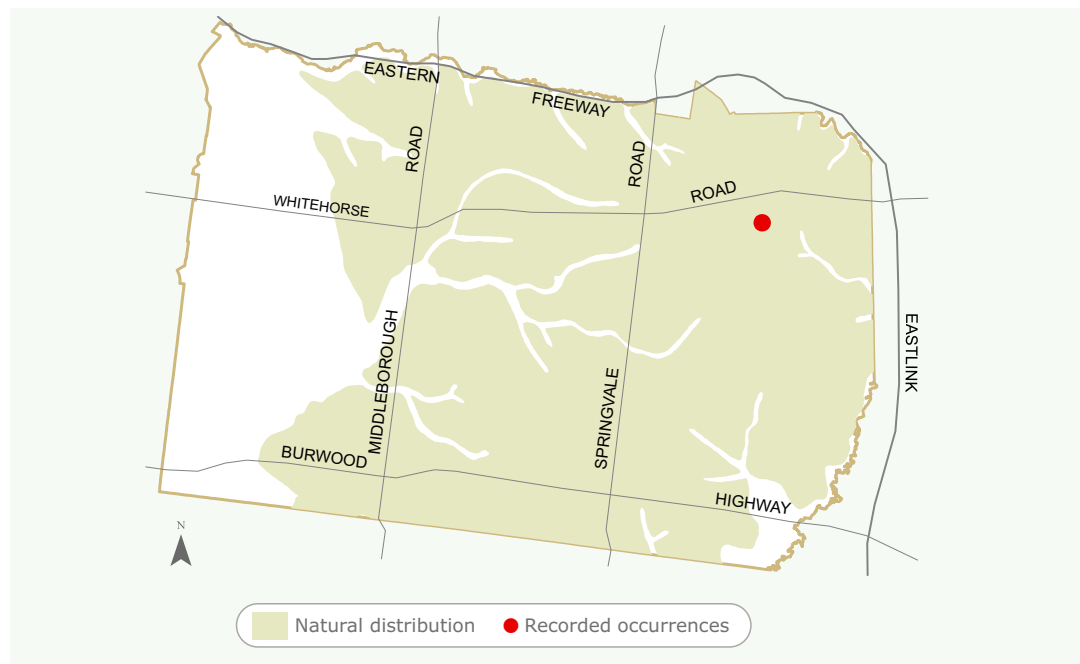


Image:

Photographer: Hill, R.
'Pultenaea daphnoides'



R. Hill © Australian National Botanic Gardens

Having trouble sourcing this species?



For further information
contact ParksWide
Phone: (03) 9262 6222

For more information about Council services
and programs please phone 9262 6333 or visit
www.whitehorse.vic.gov.au