



Lobelia anceps

Angled Lobelia

Height:	Prostrate - 30cm
Width:	Spreading
Habit:	Erect to spreading perennial herb with a trailing habit.
Foliage:	Soft narrow to oval toothed green leaves. Lower leaves are broader and longer, to 5cm long.
Flowers:	Pale blue to mauve small fan-shaped flowers. Flowers most of the year.
Requirements:	Moist soils. Full or partial sun.
Cultivation & uses:	A small groundcover suitable for bog gardens and beside water features.

Local Distribution:

Map is indicative to the natural distribution of the species based on the best available knowledge.

The natural occurrence of this species is rare.

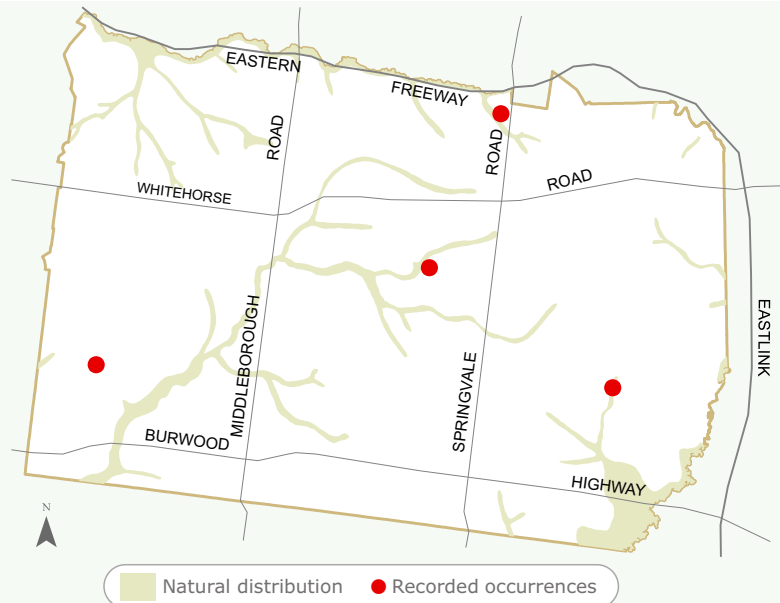


Image:

Photographer: Fagg, M.
'Lobelia alata'



© M. Fagg, [Australian National Botanic Gardens](#)

Having trouble sourcing this species?



For further information
contact ParksWide
Phone: (03) 9262 6222

For more information about Council services
and programs please phone 9262 6333 or visit
www.whitehorse.vic.gov.au