



Brachyscome multifida (local form)

Cut Leaf Daisy

Height:	10cm - 40cm
Width:	0.2m - 1m
Habit:	Fast-growing, low spreading perennial herb.
Foliage:	Fine, soft dark-green leaves to 7cm long.
Flowers:	Prolific single blue, mauve, pink or white daisy flowerheads held above the foliage on erect on stems. Flowers most of the year, peaking in Spring and Summer.
Requirements:	Adaptable, from heavy clay to light sandy loams. Tolerates dryness once established. Full or partial sun.
Cultivation & uses:	A popular ornamental plant, effective as mass plantings, over retaining walls, in rockeries, as container plants and to soften borders. Spreads by underground suckers and roots to form a clump making it useful as a soil binder. Removal of spent flowerheads will encourage new ones. Pruning is beneficial.

Local Distribution:

Map is indicative to the natural distribution of the species based on the best available knowledge.

The natural occurrence of this species is rare.

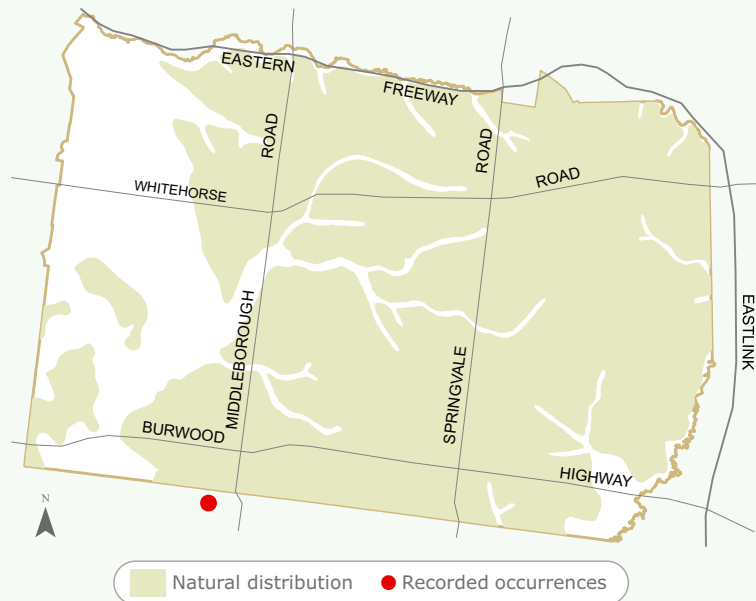
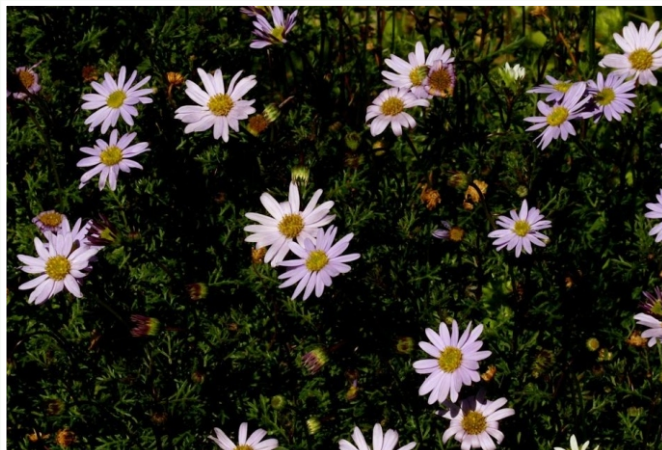


Image:

Photographer: Ian Moodie
'*Brachyscome multifida* (local form)'
Natural flora of Whitehorse



Copyright © Ian Moodie 2009

Having trouble sourcing this species?



For further information
contact ParksWide
Phone: (03) 9262 6222

For more information about Council services
and programs please phone 9262 6333 or visit
www.whitehorse.vic.gov.au