



Brachyscome cardiocarpa

Swamp Daisy

Height:	10cm - 30cm
Width:	20cm
Habit:	Fast-growing tufted perennial herb.
Foliage:	Tuft of dark green to purple colour grass-like leaves to 20cm long.
Flowers:	Single white or blue daisy flowerheads 4cm wide held on long erect stems above the leaves from June to December.
Requirements:	Moist soils. Full or partial sun.
Cultivation & uses:	Useful for use in rockeries, containers and boggy areas.

Local Distribution:

Map is indicative to the natural distribution of the species based on the best available knowledge.

The natural occurrence of this species is rare.

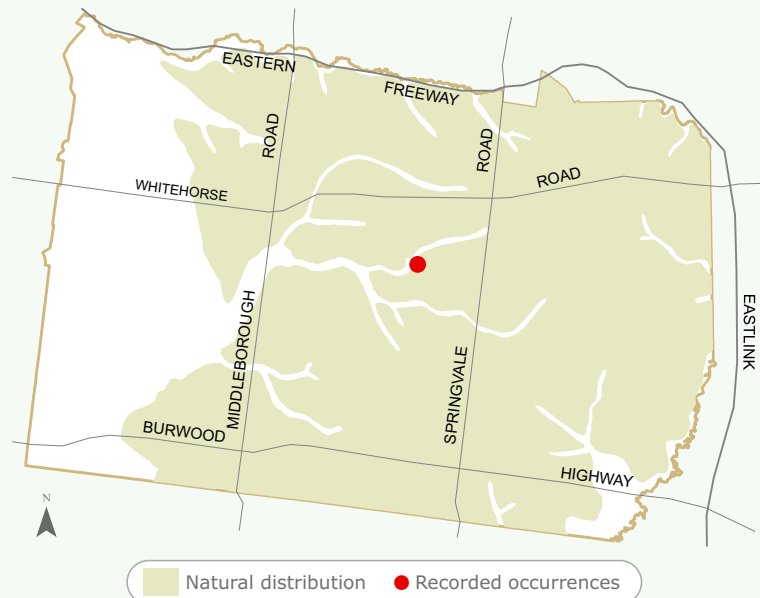
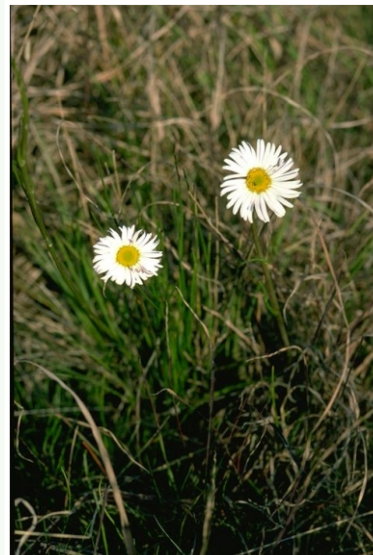


Image:

Photographer: Hill, R., 2003
'Brachyscome cardiocarpa'



R. Hill © Australian National Botanic Gardens

Having trouble sourcing this species?



For further information
contact ParksWide
Phone: (03) 9262 6222

For more information about Council services
and programs please phone 9262 6333 or visit
www.whitehorse.vic.gov.au